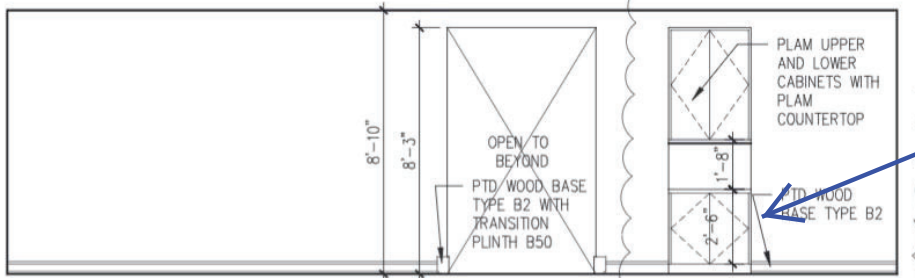


TEX/AM Note:
These cabinets are not available in 24" H as shown on details on A 5 02

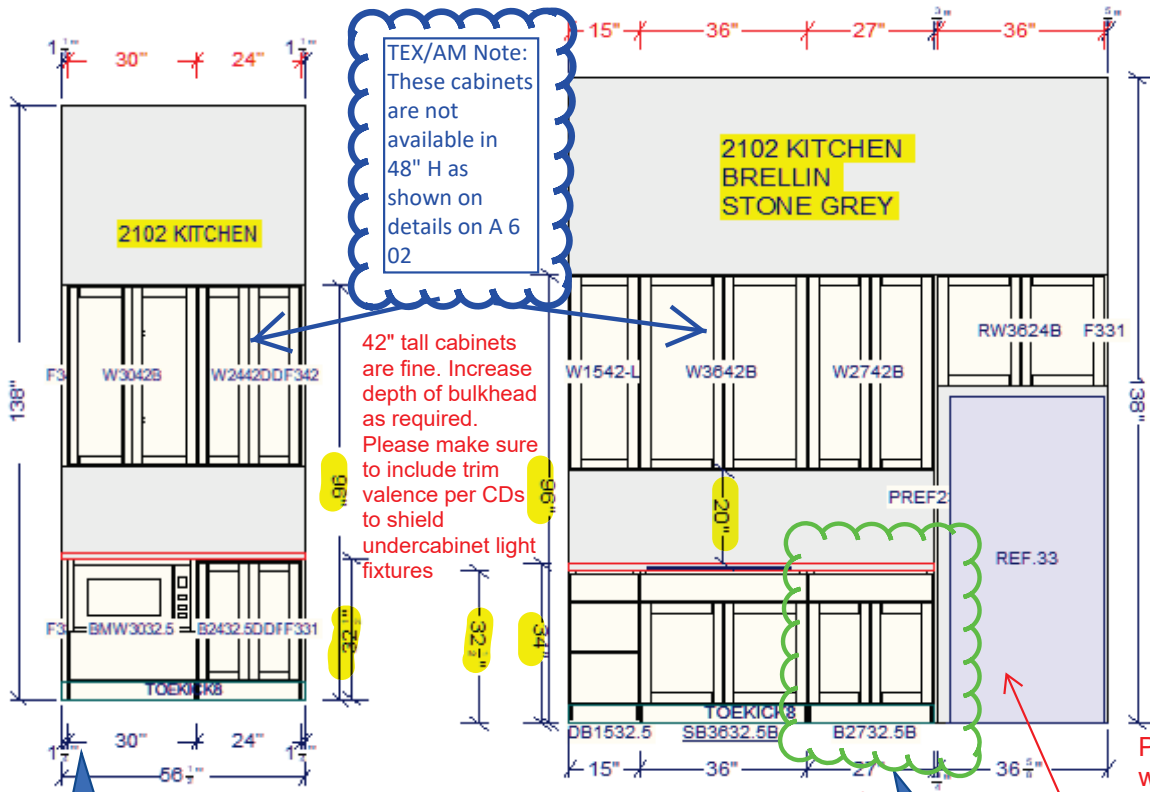


31
A5.02
2100 - EAST ELEV
1/4" = 1'-0"

All Plywood

1-SCRIBE
1 Touch up kit

R



TEX/AM Note:
 These cabinets
 are not
 available in
 48" H as
 shown on
 details on A 6
 02

42" tall cabinets
 are fine. Increase
 depth of bulkhead
 as required.
 Please make sure
 to include trim
 valence per CDs
 to shield
 undercabinet light
 fixtures

TexAm and sub, please make sure to field
 verify clear dimensions prior to fabrication.

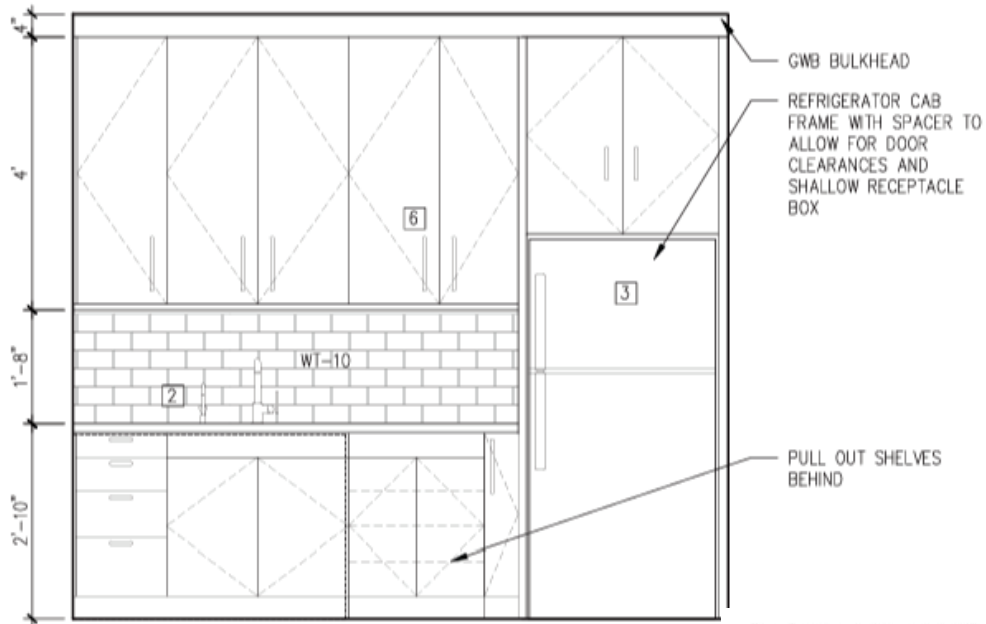
Please coordinate
 with final approved
 refrigerator to ensure
 opening size and
 operation of hinges
 and door swing
 required to access
 any drawers etc.

Filler
 extra
 For fill

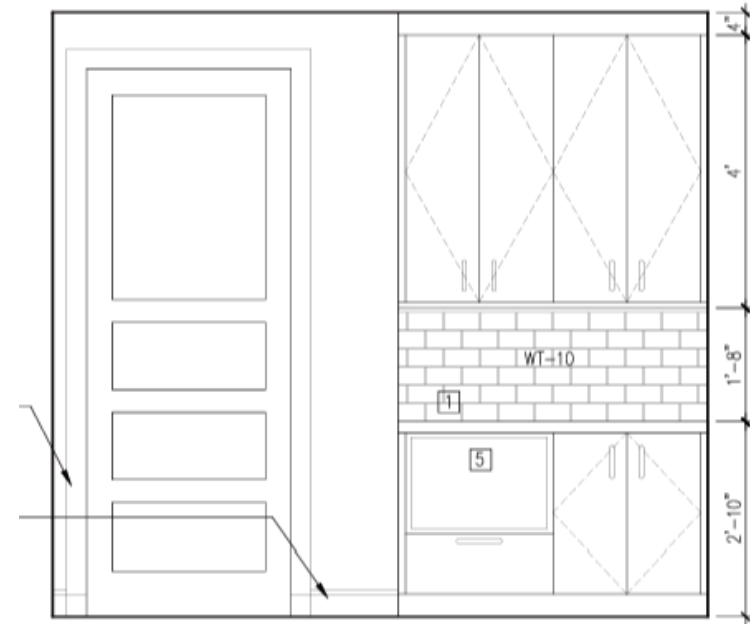
2- scribe
 1- touch up kit

Roll out
 Shelves

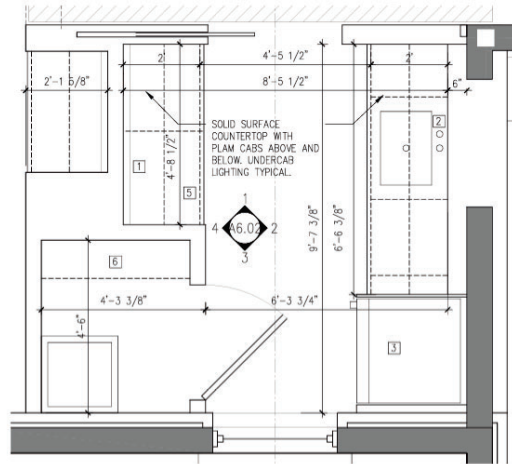
TexAm and sub, please make sure
 to field verify clear dimensions prior
 to fabrication. TexAm, and sub,
 please coordinate final microwave
 submission with
 this cabinet.



2 02-09 EAST ELEVATION
A6.02 1/2" = 1'-0"



4 02-09 WEST ELEVATION
A6.02 1/2" = 1'-0"

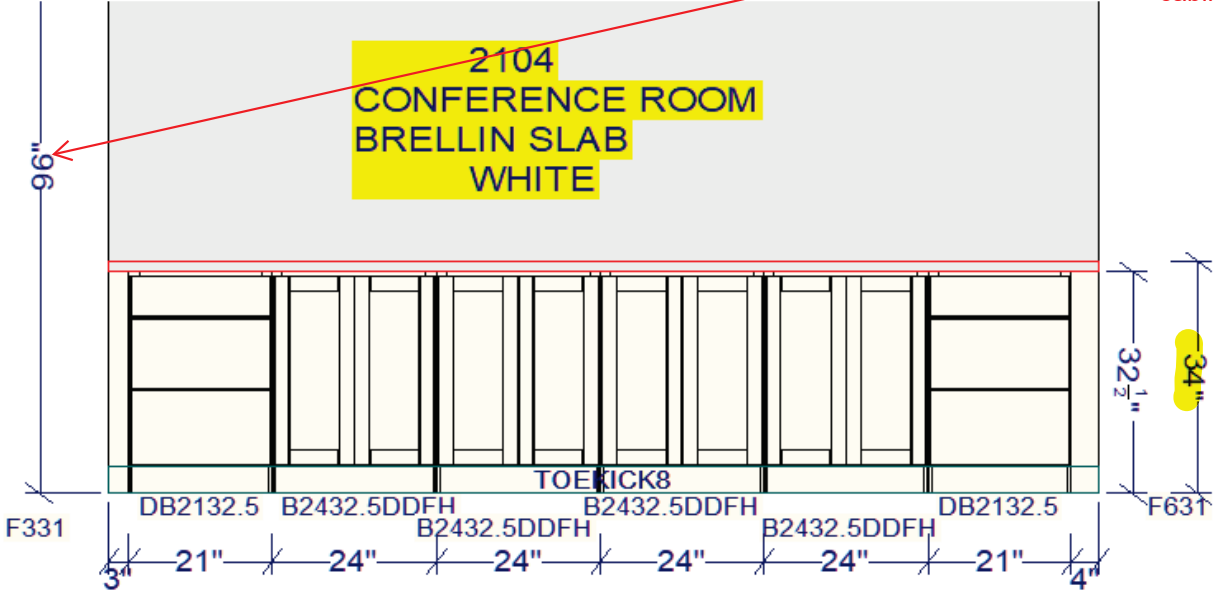


5 02-09 PLAN
A6.02 1/2" = 1'-0"

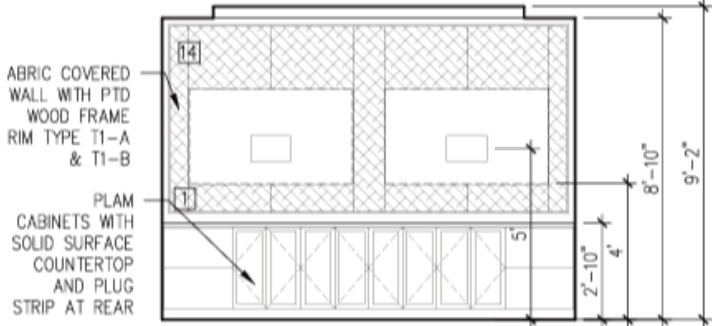
2102 Kitchen

1- scribe
1-Touch up kit

verify in field.
bulkhead is being
adjusted to provide
space for FCU.
doesn't affect
cabinets below

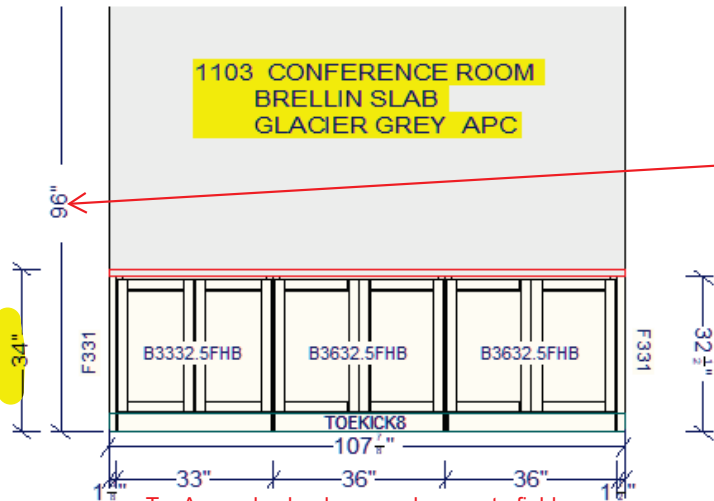


TexAm and sub, please make sure to field
verify clear dimensions prior to fabrication.

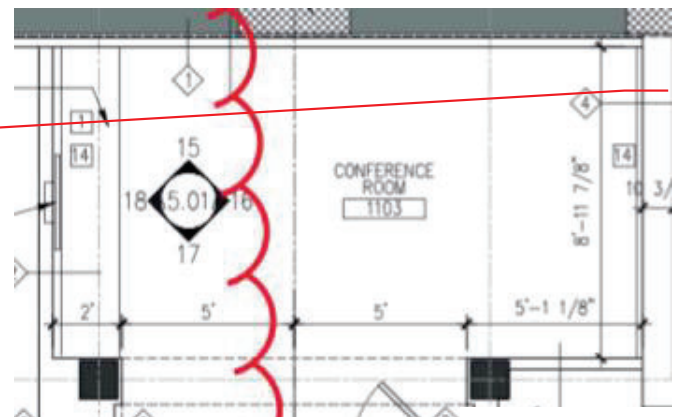


26
A5.02
2107- NORTH ELEV
1/4" = 1'-0"

Changed to
2104



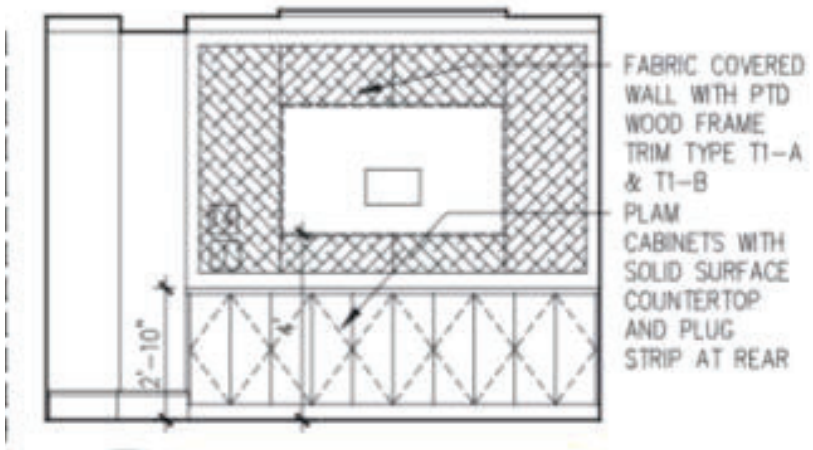
TexAm and sub, please make sure to field verify clear dimensions prior to fabrication.



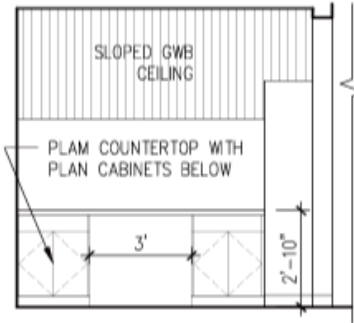
verify in field. bulkhead is being adjusted to provide space for FCU. doesn't affect cabinets below

1-scribe
1-Touch up kit

All Plywood

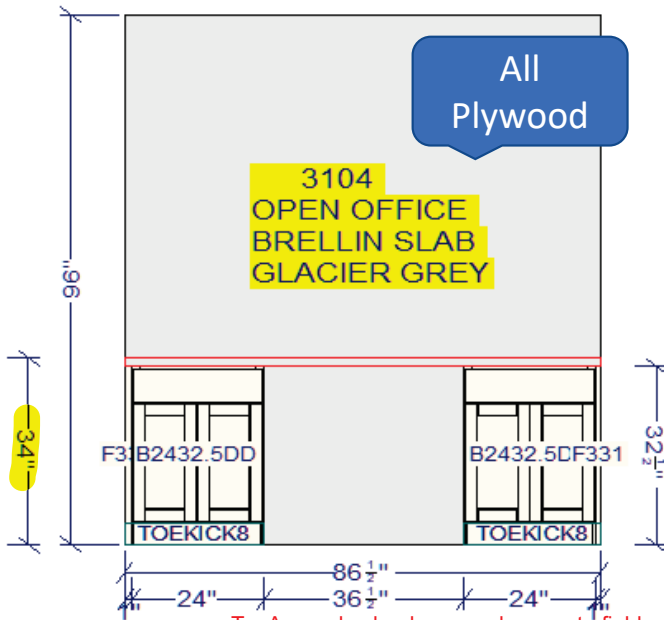


18
A5.01A
1103 - WEST ELEV
1/4" = 1'-0"



15
A5.03

3108/3104 - WEST ELEV
1/4" = 1'-0"



All Plywood

TexAm and sub, please make sure to field verify clear dimensions prior to fabrication.

